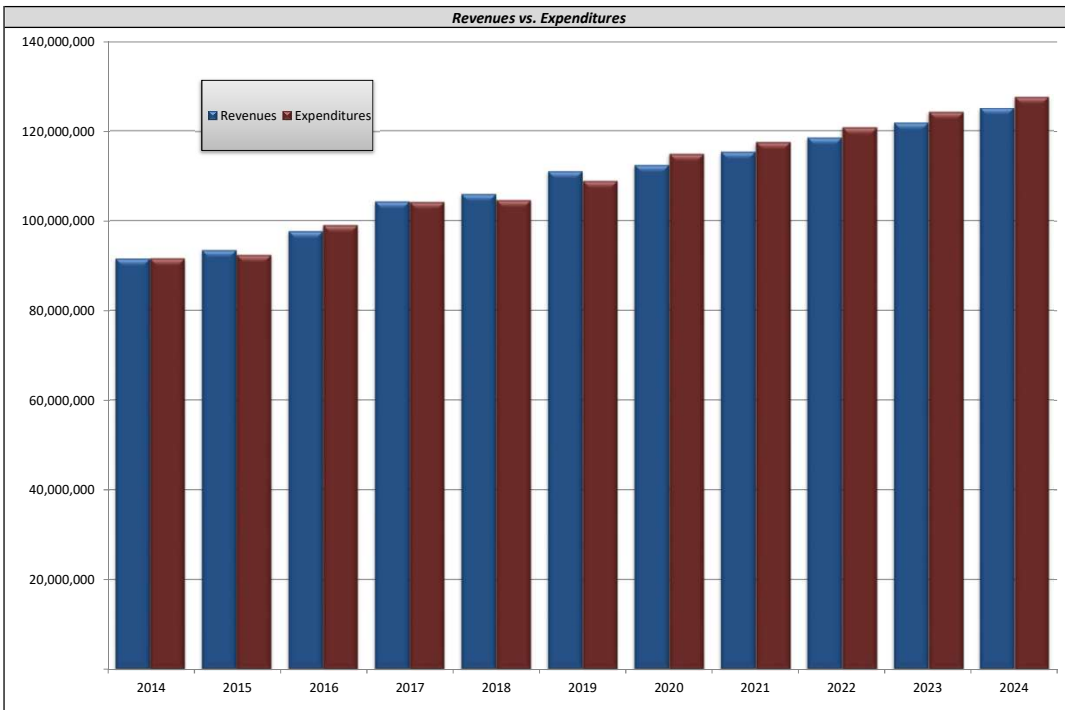


# Quakertown Community School District

Concise Summary Report



	(Actual) 2014	(Actual) 2015	(Actual) 2016	(Actual) 2017	(Actual) 2018	(Projected) 2019	(Projected) 2020	(Projected) 2021	(Projected) 2022	(Projected) 2023	(Projected) 2024
<b>REVENUES</b>											
Real Estate Taxes	55,614,100	56,706,035	58,266,636	60,485,600	62,603,626	65,172,492	67,112,793	69,152,420	71,252,255	73,414,114	75,639,830
Act 511 Taxes	9,774,481	10,036,898	10,605,046	11,130,607	11,635,475	11,771,853	12,192,215	12,545,166	12,908,449	13,282,368	13,667,239
Other Local Revenue	3,840,419	3,974,849	4,085,091	4,107,793	3,770,654	4,148,357	4,367,679	4,455,033	4,544,133	4,635,016	4,727,716
Basic Instructional and Operating Subsidies	9,203,185	9,197,760	9,556,455	9,981,255	10,142,715	10,324,129	10,518,264	10,623,447	10,729,681	10,836,978	10,945,348
Revenue for Specific Educational Programs	2,357,853	2,651,138	2,976,553	3,023,095	3,069,199	3,211,831	3,145,831	3,180,179	3,214,929	3,250,085	3,285,653
Other State Revenue	9,445,282	9,855,871	10,959,012	13,941,065	13,567,554	13,200,804	13,854,164	14,143,453	14,606,128	15,126,489	15,570,445
Federal Revenue	741,192	553,199	635,531	603,521	617,189	647,664	647,664	660,617	673,830	687,306	701,052
Other Financing Sources	606,522	501,371	587,113	999,904	523,649	2,502,974	535,000	545,000	555,200	565,604	576,216
<b>TOTAL REVENUES</b>	<b>91,583,034</b>	<b>93,477,121</b>	<b>97,671,437</b>	<b>104,272,838</b>	<b>105,930,061</b>	<b>110,980,104</b>	<b>112,373,610</b>	<b>115,305,314</b>	<b>118,484,604</b>	<b>121,797,960</b>	<b>125,113,500</b>
<b>EXPENDITURES</b>											
Salaries and Benefits	59,594,641	60,051,945	62,510,280	65,940,737	66,592,068	67,401,918	71,535,465	73,732,456	76,227,088	78,923,419	81,631,317
Operating Expenses	23,952,647	24,475,626	27,488,306	27,534,102	27,510,005	29,935,162	31,515,401	31,742,721	32,381,386	33,034,024	33,700,955
Debt Service & Transfers	8,089,678	7,863,516	9,052,169	10,678,651	10,478,140	11,498,547	11,793,529	12,003,511	12,156,969	12,213,904	12,224,013
<b>TOTAL EXPENDITURES</b>	<b>91,636,966</b>	<b>92,391,087</b>	<b>99,050,755</b>	<b>104,153,489</b>	<b>104,580,213</b>	<b>108,835,627</b>	<b>114,844,395</b>	<b>117,478,688</b>	<b>120,765,443</b>	<b>124,171,347</b>	<b>127,556,284</b>
<b>NET OPERATING BALANCE</b>	<b>(53,932)</b>	<b>1,086,034</b>	<b>(1,379,317)</b>	<b>119,349</b>	<b>1,349,848</b>	<b>2,144,477</b>	<b>(2,470,785)</b>	<b>(2,173,374)</b>	<b>(2,280,839)</b>	<b>(2,373,387)</b>	<b>(2,442,785)</b>
<b>FUND BALANCE (BEGINNING OF THE YEAR)</b>	<b>13,606,896</b>	<b>15,488,166</b>	<b>15,812,815</b>	<b>14,433,498</b>	<b>14,552,847</b>	<b>15,902,695</b>	<b>18,047,172</b>	<b>15,576,387</b>	<b>13,403,013</b>	<b>11,122,175</b>	<b>8,748,787</b>
<b>ADJUSTMENTS</b>	<b>1,935,202</b>	<b>(761,385)</b>	<b>-</b>	<b>-</b>	<b>-</b>	<b>-</b>	<b>-</b>	<b>-</b>	<b>-</b>	<b>-</b>	<b>-</b>
<b>FUND BALANCE (END OF THE YEAR)</b>	<b>15,488,166</b>	<b>15,812,815</b>	<b>14,433,498</b>	<b>14,552,847</b>	<b>15,902,695</b>	<b>18,047,172</b>	<b>15,576,387</b>	<b>13,403,013</b>	<b>11,122,175</b>	<b>8,748,787</b>	<b>6,306,003</b>



Zoom in Chart

Auto Zoom

